

QUEEN ST E & WOODBINE AVE
TORONTO, ONTARIO



QUEEN ST E & WOODBINE AVE

TORONTO, ONTARIO

LOCATION

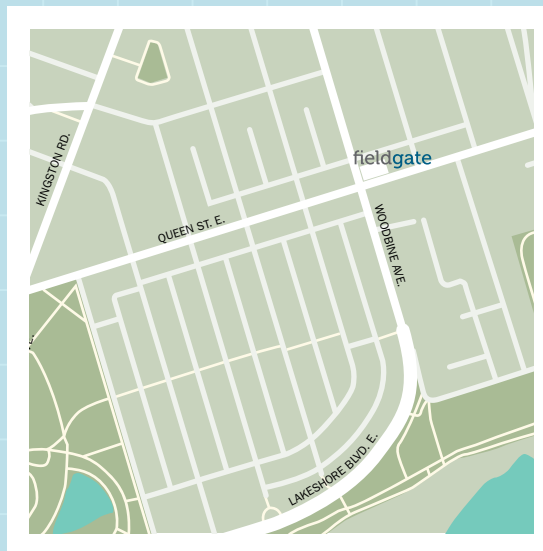
1884 Queen St E
Toronto, Ontario

TOTAL GLA

6,100 sq. ft.

SITE FEATURES

- Located in the established "Beaches" area of Toronto
- High visibility corner situated at the intersection of two prominent roads



DEMOGRAPHICS

Population

123,294 (3 km)
290,265 (5 km)

Average Household Income

\$114,141 (3 km)
\$101,172 (5 km)

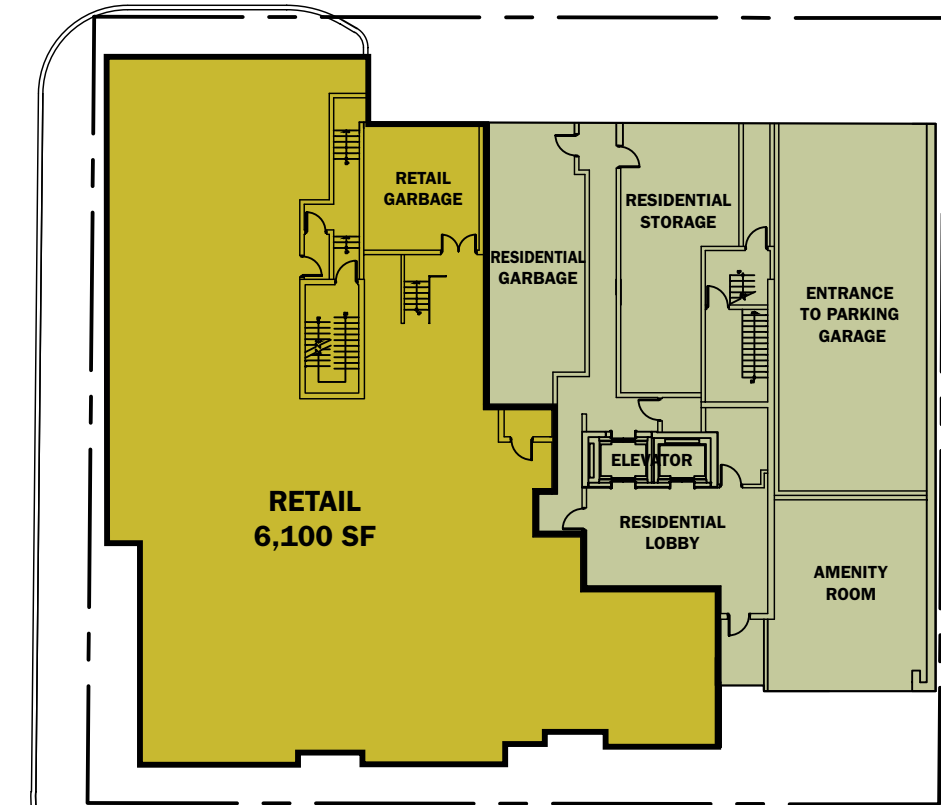
Employment

32,900 (3 km)
74,198 (5 km)



WOODBINE AVENUE

← ONE WAY



QUEEN STREET EAST



■ AVAILABLE SPACE
■ RESIDENTIAL SPACE